



Vehicle conversion

WHEELCHAIR ACCESSIBLE VEHICLE

VanPartner by Mercedes-Benz

Mercedes-Benz Sprinter



 Tomorrow's
safety today!



www.amf-bruns.de



WHEELCHAIR ACCESSIBLE VEHICLE

Mercedes-Benz Sprinter



With a lift, the wheelchair gets access to the vehicle. The AMF-Bruns restraint system secures wheelchair and occupant.



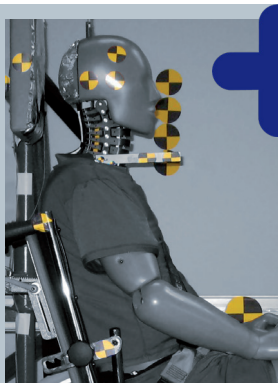
Smartfloor aluminium floor and removable single seats provide flexibility inside your vehicle.



Step and grab handle on the side entry allow comfortable access to the passenger cabin.

THESE FACTS MAKE ALL THE DIFFERENCE

- » flexible & individual planned Smartfloor Aluminium floor
- » quick & flexible configuration of vehicle's interior with removable seats
- » Smartseats with original upholstery or artificial leather
- » Linearlift AL1 is fully automatic. See-through platform design ensures excellent rear view and meets DIN 75078
- » fixed or electric step allow comfortable access to the passenger cabin
- » Optional head & backrest FutureSafe is reliable, space saving and comfortable; wall mounting allows flexible positioning



+ Tomorrow's safety today!

FUTURESAFE® Head & backrest

FutureSafe is a safe, space-saving and comfortable patented safety system, which is flexibly customisable and comes with an integrated shoulder belt for the wheelchair occupant.

PROTEKTOR® Wheelchair & occupant restraint system

The AMF-Bruns Protektor restraint system meets DIN 75078 part II, ISO 10542.

PROSAFE® „Kraftknotenadapter“ Integrated lap belt

With the „Kraftknotenadapter“ system the wheelchair is quickly and precisely fitted to the vehicle's floor. It comes with a pelvis belt for the wheelchair occupant.

AMF-BRUNS PROVIDES THE MAXIMUM OF SAFETY

- » safety tested AMF-Bruns PROTEKTOR wheelchair & occupant restraint system according to DIN 75078-2
- » Linearlift AL1 is EMC tested according to EU regulations
- » FutureSafe head & backrest meets ISO 10542 and DIN 75078-2
- » Vehicle conversion according to DIN 75078-1/2



AMF-Bruns GmbH & Co. KG | Hauptstraße 101 | D-26689 Apen
Telefon +49 (0) 44 89 / 72 72 -33 / -50 / -38 | Fax +49 (0) 44 89 / 62 45
hubmatik@amf-bruns.de

www.amf-bruns.de



DIN EN ISO 9001
REG.-NR. 01 0105027