



Lowering suspension systems

WAV WITH LOWERING SUSPENSION

Hydraulic lowering suspension with ramp



Tomorrow's
safety today!



www.amf-bruns.de



ACCESSIBLE VEHICLE WITH LOWERING SUSPENSION

Hydraulic lowering suspension with ramp



The lowered vehicle can be accessed by the wheelchair.



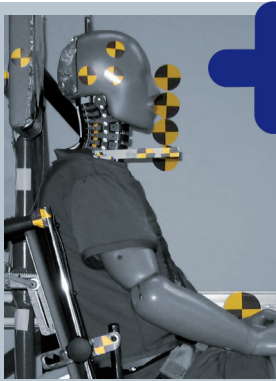
Vehicle with folded ramp. Rear view is maintained.



Vehicle ready for departure (standard height).



Lowered vehicle.



Tomorrow's safety today!

FUTURESAFE® Head & backrest

FutureSafe is a safe, space-saving and comfortable patented safety system, which is flexibly customisable and comes with an integrated shoulder belt for the wheelchair occupant.

PROTEKTOR® Wheelchair & occupant restraint system

The AMF-Bruns Protektor restraint system meets DIN 75078 part II, ISO 10542.

PROSAFE® „Kraftknotenadapter“ Integrated lap belt

With the „Kraftknotenadapter“ system the wheelchair is quickly and precisely fitted to the vehicle's floor. It comes with a pelvis belt for the wheelchair occupant.

TECHNICAL DATA

- | | | | |
|----------------------|---|---|---|
| » Lowering system | Strong, low-noise power pack, 12 V | » Wheelchair restraint | 4-point wheelchair restraint system, crash tested |
| » Ramp | Aluminium with anti-slip surface, foldable in the centre, gas strut supported, profile: Euro Ramp | » Safety belt for the wheelchair occupant | Pelvis belt and automatic shoulder belt |
| » Lowering operation | Via rocker switch in the rear | | |
| » Lifting operation | Automatically when rear door is being closed | | |

AMF-BRUNS PROVIDES THE MAXIMUM OF SAFETY

- » All conversions come with EMC testing according to EU regulations
- » Security valves ensure smooth lowering and lifting of the vehicle
- » AMF-Bruns 4-point restraint system meets DIN 75078, part II and ensures that the wheelchairs are safely fixed to the vehicle floor
- » AMF-Bruns automatic shoulder belt is in-vehicle tested according to DIN 75078 and EU regulation 2007/46
- » All mounting parts 20 G pull-tested



AMF-Bruns GmbH & Co. KG | Hauptstraße 101 | D-26689 Apen
 Telefon +49 (0) 44 89 / 72 72 50 | Fax +49 (0) 44 89 / 62 45
 hubmatik@amf-bruns.de

www.amf-bruns.de



DIN EN ISO 9001
 REG.-NR. 01 0105027