



Vehicle conversion

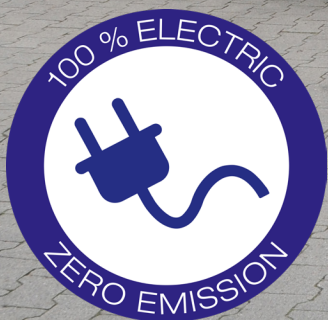
WHEELCHAIR ACCESSIBLE VEHICLE



MAXUS

SAIC Maxus EV80 8-seater

 Tomorrow's
safety today!



www.amf-bruns.de

WHEELCHAIR ACCESSIBLE VEHICLE

SAIC Maxus EV80 8-seater



Wheelchair safely enters the vehicle via the lift.



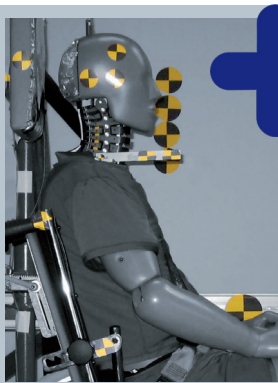
Smartfloor provides flexibility inside your vehicle.



Step and grab handle at the side entry allow easy access to the passenger cabin.

THESE FACTS MAKE ALL THE DIFFERENCE

- » flexible & individual planned Smartfloor aluminium floor
- » quick & flexible configuration of passenger cabin with removable seats
- » Smartseats with upholstery or artificial leather
- » Linearlift AL1 is a fully automatic lift for the rear door. See-through platform design ensures excellent rear view and meets DIN 75078
- » fixed step at side entry for easy access to the passenger cabin
- » glazing, interior trim and roof liner of passenger cabin by AMF-Bruns
- » Two roof heights available
- » Possible seat arrangements:
7 passengers + 1 driver
4 wheelchairs + 2 co-drivers + 1 driver



+ Tomorrow's safety today!

FUTURESAFE® Head & backrest

FutureSafe is a safe, space-saving and comfortable patented safety system, which is flexibly customisable and comes with an integrated shoulder belt for the wheelchair occupant.

PROTEKTOR® Wheelchair & occupant restraint system

The AMF-Bruns Protektor restraint system meets DIN 75078 part II, ISO 10542.

PROSAFE® „Kraftknotenadapter“ Integrated lap belt

With the „Kraftknotenadapter“ system the wheelchair is quickly and precisely fitted to the vehicle's floor. It comes with a pelvis belt for the wheelchair occupant.

TECHNICAL DATA

- » Range: up to 200 km
- » Engine power: 100 kW max. (FWD) / Ø 60 kW
High-voltage battery with safety switch in case of accident or maintenance
- » Battery capacity: 285 Wh
- » Charging time: **direct current:** DC approx. 2 hours / CCS / 28 - 30 kWh (depending on model)
alternating current: AC approx. 8 hours / Type 2 / 6,6 - 7 kWh



AMF-Bruns GmbH & Co. KG | Hauptstraße 101 | D-26689 Apen
Telefon +49 (0) 44 89 / 72 72 50 | Fax +49 (0) 44 89 / 62 45
hubmatik@amf-bruns.de

www.amf-bruns.de

