



Vehicle conversion

WHEELCHAIR ACCESSIBLE VEHICLE

PremiumPartner
MAN Truck & Bus

MAN TGE



 Tomorrow's
safety today!



www.amf-bruns.de

WHEELCHAIR ACCESSIBLE VEHICLE

MAN TGE



The wheelchair enters the vehicle via lift. AMF-Bruns PROTEKTOR system for wheelchair and occupant restraint.



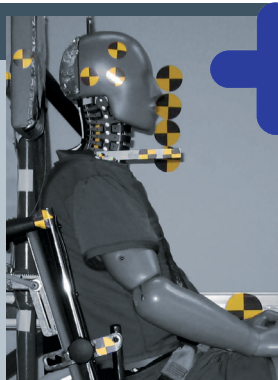
Smartfloor provides flexibility inside your vehicle.



Optional head and backrest FUTURESAFE for a maximum of safety.

THESE FACTS MAKE ALL THE DIFFERENCE

- » flexible & individual planned Smartfloor Aluminium floor
- » quick & flexible configuration of vehicle's interior with removable seats
- » Smartseats with original upholstery or artificial leather
- » Linearlift AL1 is a fully automatic lift for rear or side door. See-through platform design ensures excellent rear view and meets DIN 75078
- » electric step for easy entry process in the second and third row
- » Optional head and backrest FutureSafe is reliable, space saving and comfortable. floormounted or wall-mounted available
- » interior panelling by AMF-Bruns



+ Tomorrow's safety today!

FUTURESAFE® Head- & backrest

FutureSafe is a safe, space-saving and comfortable patented safety system, which is flexibly customisable and comes with an integrated shoulder belt for the wheelchair occupant.

PROTEKTOR® Wheelchair & occupant restraint system

The AMF-Bruns Protektor restraint system meets DIN 75078 part II, ISO 10542.

PROSAFE® „Kraftknotenadapter“ Integrated lap belt

With the „Kraftknotenadapter“ system the wheelchair is quickly and precisely fitted to the vehicle's floor. It comes with a pelvis belt for the wheelchair occupant.

AMF-BRUNS PROVIDES THE MAXIMUM OF SAFETY

- » The AMF-Bruns 4-point restraint system meets DIN 75078, and ensures that the wheelchairs are safely fixed to the vehicle's floor
- » Linearlift with EMC testing according to EU regulations
- » FutureSafe meets ISO 10542 and DIN 75078-2
- » Vehicle conversion according to DIN 75078-1/2



AMF-Bruns GmbH & Co. KG | Hauptstraße 101 | D-26689 Apen
 Telefon +49 (0) 44 89 / 72 72 -33 / -50 / -38 | Fax +49 (0) 44 89 / 62 45
 hubmatik@amf-bruns.de

www.amf-bruns.de



DIN EN ISO 9001
 REG.-NR. 01 0105027